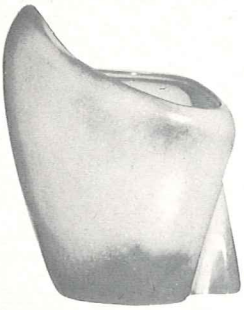


Appropriate Containers For Beautiful Flower Arrangements



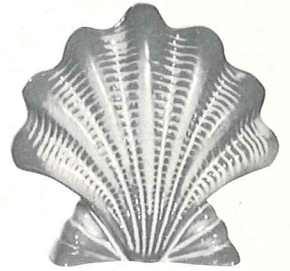
6-7" FREE FORM VASE—1.00



35-6" FOOTED BOWL—1.00



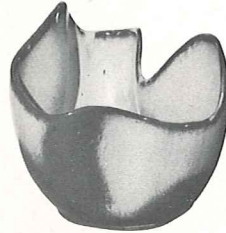
190-6" WALL VASE—1.00



54-FAN SHELL VASE—1.50



F34-8" RICE BOWL—2.00



F29-6" DRAPERY VASE—1.50



F35-7" PEDESTALLED VASE—2.00



57S-6" CORNUCOPIA—1.00



59-6 1/2" CANTEEN—2.00



F33-7" FLUTED PLANTER—2.00



F52-7" PEDESTALLED URN—2.50



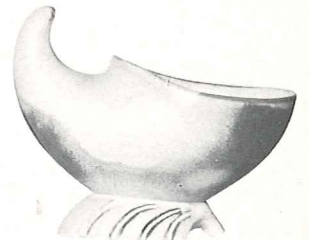
OLD FASHIONED PITCHER SET
F30A-5 1/2" PITCHER—1.50
F30B-7" BOWL—1.50



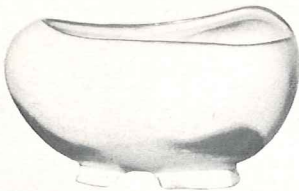
40A—SMALL PITCHER—1.00
40B—BOWL—1.00



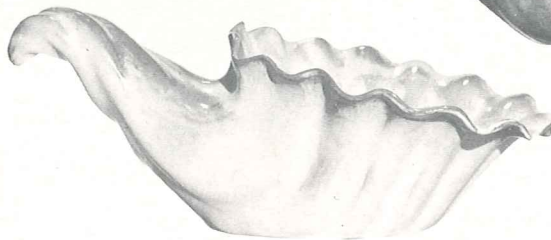
7-7" VASE—1.50



57-7" CORNUCOPIA—1.50



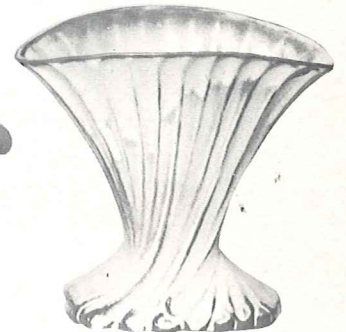
234-FOOTED FREE FORM BOWL—2.00



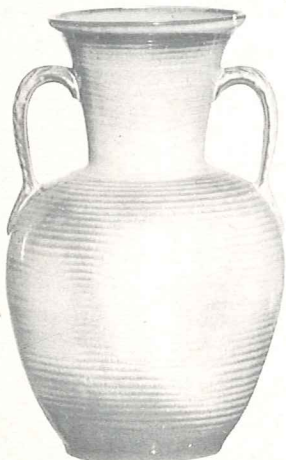
215-15" CORNUCOPIA—7.00



222-12" CORNUCOPIA—3.00



19-7" FAN VASE—2.00



71-10" LEAF HANDLED VASE—3.50



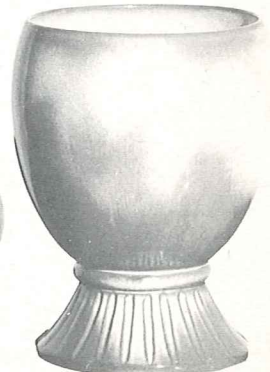
55-5" ROUND JAR—1.50



22S-5" FOOTED ROUND VASE—1.00



22-7" FOOTED ROUND VASE—2.00



52-8" URN—3.00